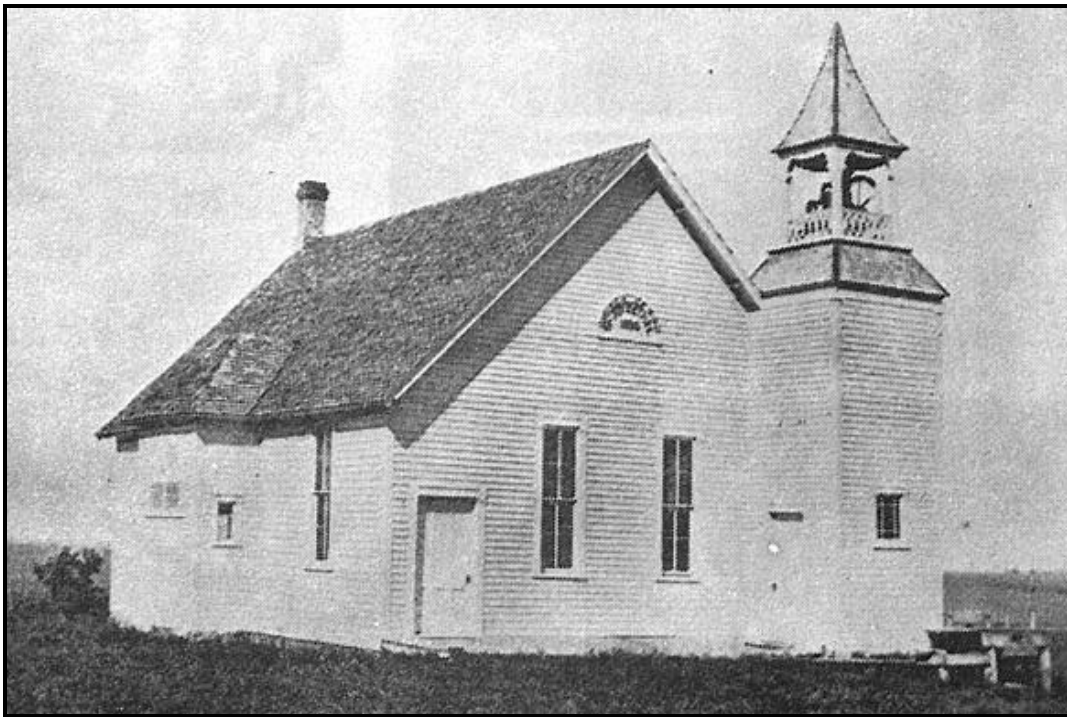


Schild home in Sioux County near the Mount Joy church.

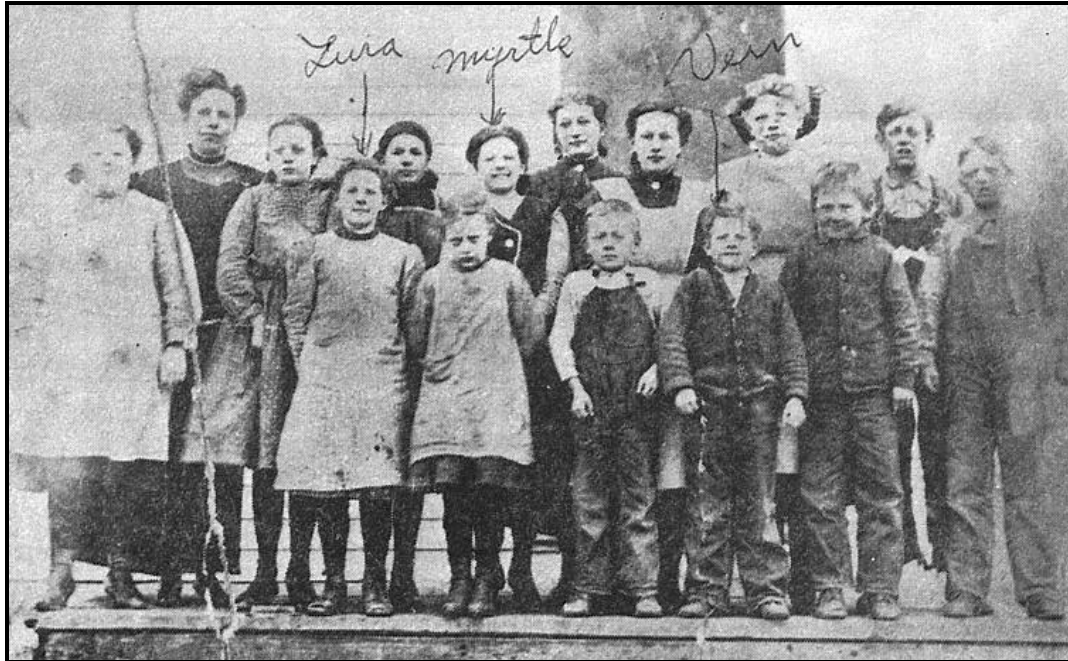
Farm located seven miles NW of Ireton and 11 miles East NE of Hawarden north of Highway 10.



**Fred and Emma's house in Sioux County, Iowa. Built in 1902.**



**Fred, Emma and family attended this Mount Joy Church of God in Sioux County, Iowa**



Schild children at school. Lura, Myrtle and Vern are indicated. [Around 1907?]



Schild Family picture taken in Sioux County at Rock Valley. Back row: Myrtle, Rae, and Lura. Vern in center. Front row: Emma (mother), Russell, Viola, Wilbur and Fred (father). [1918]



**Schild family: Back row: Lura and Rae. Front row: Russell, Wilbur, Myrtle and Vern. [1911?]**